

CERTIFICATE OF LOCATION OF GOVERNMENT CORNER

NORTHEAST Corner of Section 18, Township 107N, Range 39W

5th Principal Meridian, State of Minnesota, County of MURRAY

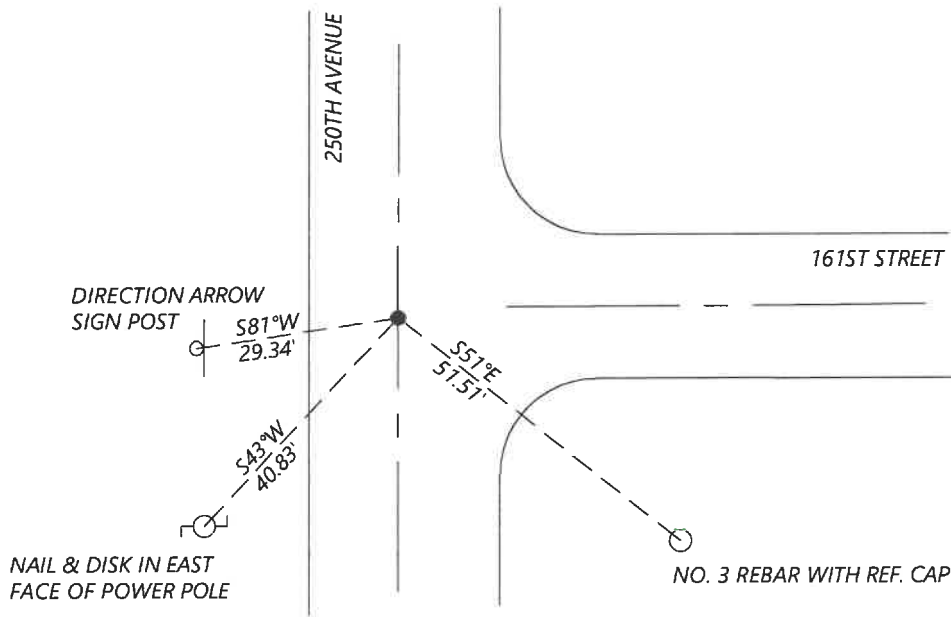
At the corner location shown on the sketch:

On 8/27/2020 found a NO. 6 REBAR WITHOUT CAP, 0.2' BELOW GRADE
DATE

left monument as found lowered monument removed monument (explain)

On _____ placed a _____
DATE

SKETCH OF REFERENCE TIES



N.T.S.

Statement of evidence for this corner location is on back of this page.

I hereby certify that this document was researched and prepared by me or under my direct supervision and that I am a licensed Land Surveyor under the laws of the State of Minnesota.

Signature [Handwritten Signature]

Date 6/16/2021 License No. 45874

Title:

- Land Surveyor Professional Engineer
- County Surveyor County Engineer

OFFICE OF THE COUNTY RECORDER

County of Murray

I hereby certify that this document was filed in the Co.

Recorder's office at _____ M. on the _____ day of _____ A.D. 20 _____

County Recorder Karen Brown

by JUN 22 2021, Deputy

DOCUMENT NO. _____

Statement of Evidence:

Northeast Corner of Section 18, Township 107 North, Range 39 West, 5th Principal Meridian, Murray County, Minnesota.

The DNR Bureau of Engineering contracted the following for survey information:

Minnesota Secretary of State's Office

Murray County Recorder's Office

Murray County Highway Engineer's Office

1861 *U.S. General Land Office notes obtained from the Secretary of State's Office show the corner marked with pits & mound.*

1907 *Survey's Record Book A, page 205, obtained from the County Recorder's Office contains a survey by J.W. Woolstencraft. Survey state that the government corner was found at corner. A description of a monument and a distance to it is not given.*

1991 *October, DNR Bureau of Engineering hired a backhoe to dig for evidence of a monument at corner. Dug a 10ft by 10ft by 2.5ft deep hole, the center of which being on the centerline of north-south road and inline with a fence line to west. No evidence of a monument was found. Set a DNR Survey Marker on the centerline of the north-south road and inline with the fence to the west and found it to be:*

inline with the westerly projection of the centerline of the road to the east

2645.77ft from the North Quarter corner of Section 18

2631.69ft from the East Quarter corner of Section 7

2016 *October, A survey in Section 17 by Dennis Esplan shows a found monument and red survey cap at the corner.*

2018 *May, A survey in Section 18 by Dennis Esplan shows a found monument with DNR survey cap at the corner. He shows a distance of 2632.53ft to the Southeast Section Corner of Section 18.*

2020 *September, Westwood Professional Services searched and found a No. 6 rebar and 1 tie from the 1991 Corner Record. Accepted the found monument and established two additional reference ties.*

Analysis of the recovered data, field evidence and survey measurements, indicates that the monument found is the correct perpetuation of this corner. For additional information concerning this corner please contact Westwood Professional Services.